



# GAT MONTHLY MEMBERSHIP PROGRESS REPORT

Results as of: 6/30/2022

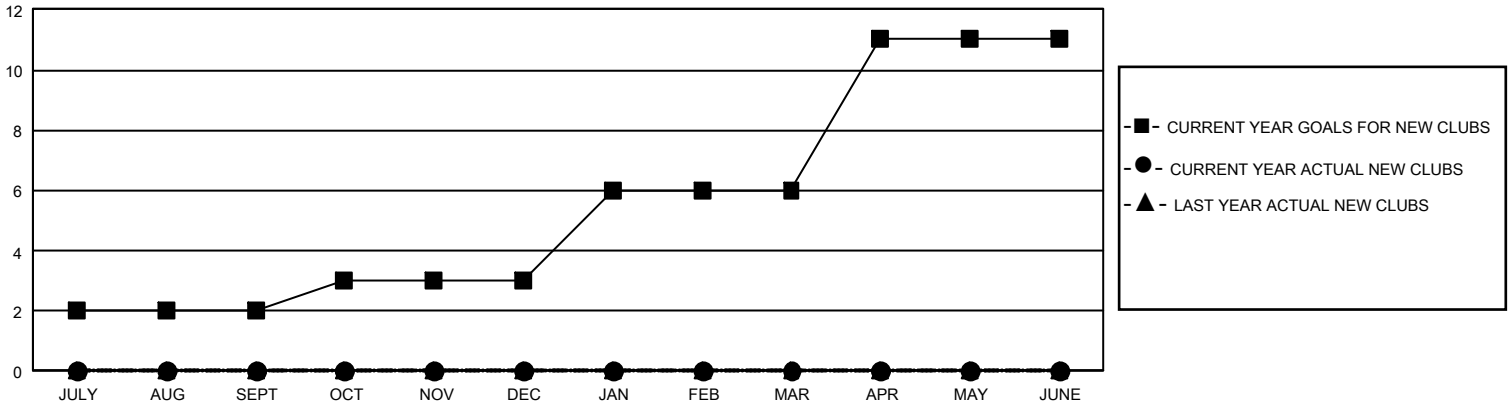
## GMT Constitutional Area 5 - C, Group A

REPORT DOES NOT INCLUDE CLUBS IN UNDISTRICTED AREAS.

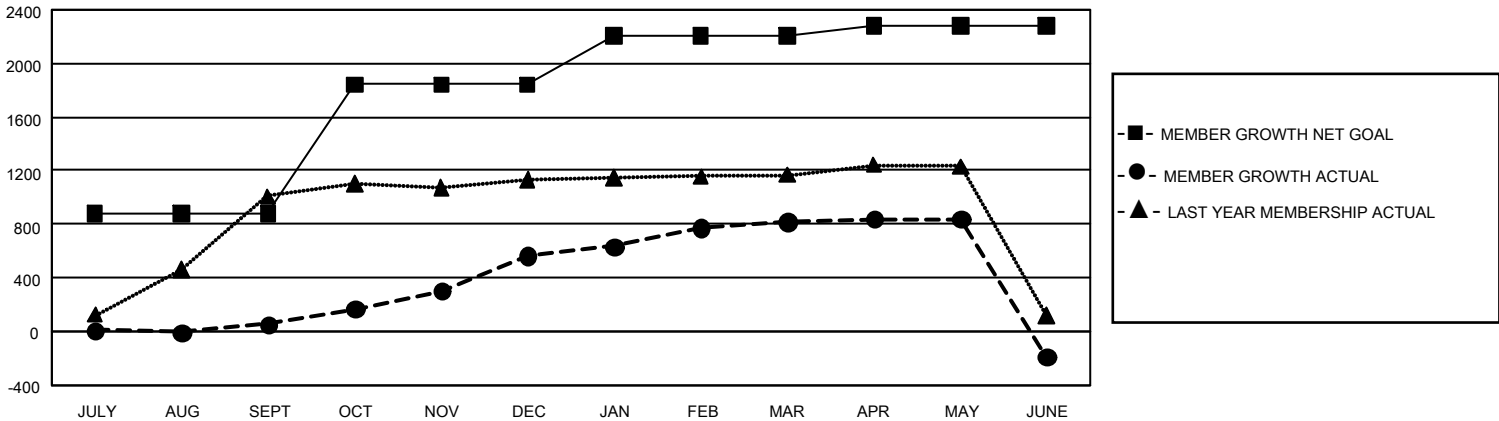
Clubs			
RESULTS FOR 2021-2022			
QUARTER	NEW CLUB GOAL	NEW CLUBS	DROPPED CLUBS
JULY/AUG/SEPT	6	0	1
OCT/NOV/DEC	3	0	0
JAN/FEB/MAR	9	0	0
APR/MAY/JUNE	15	0	0

Members			
RESULTS FOR 2021-2022			
QUARTER	MEMBER GROWTH NET GOAL	MEMBER GROWTH ACTUAL	DROPPED MEMBERS ACTUAL (including transfers)
JULY/AUG/SEPT	881	227	80
OCT/NOV/DEC	961	592	49
JAN/FEB/MAR	364	283	25
APR/MAY/JUNE	75	231	1,153

GOALS AND ACTUAL NEW CLUBS CUMULATIVE



GOALS AND ACTUAL MEMBERS CUMULATIVE



DROPPED CLUBS: 1	245 CLUBS OF 343 ADDED 1 OR MORE NEW MEMBERS	<u>GENDER DISTRIBUTION</u>	
<u>DROPPED MEMBERS</u>		MALE	4,290 (61.34%)
DECEASED	2	FEMALE	2,704 (38.66%)
CLUB CANCELLED	1	NON BINARY	0 (0.00%)
OTHER	1,304	PREFER NOT TO ANSWER	0 (0.00%)
TOTAL	1,307	TOTAL FAMILY UNIT MEMBERS	434
	<a href="#">CLICK HERE FOR CUMULATIVE MEMBERSHIP DATA</a>	FAMILY MEMBERS PAYING HALF DUES	220